

Welcome to HM Business School

Summer Term 2026

HM  Business
School



CAMPUS PAGING – INTERNATIONAL RELATIONS



Martina Schreiner

E-Mail: international-hmbs@hm.edu



Desirée Fried

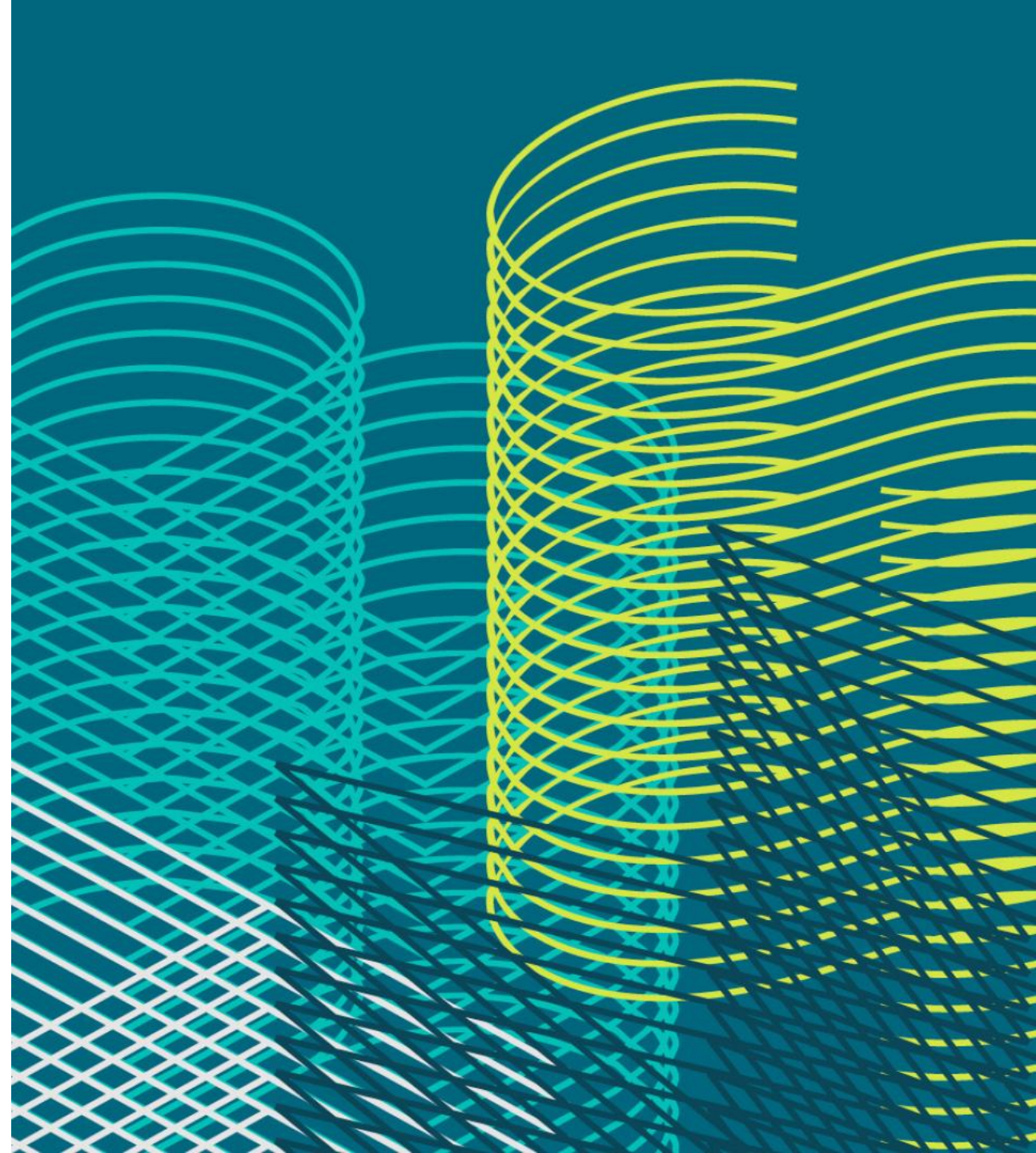
Phone: +49 (0) 89 1265 -2721/ -2221 -2716
Available Tue./Wedn. - Room: # LO 212
Mon/Thurs. – available remote
09:00–12:00 a.m.



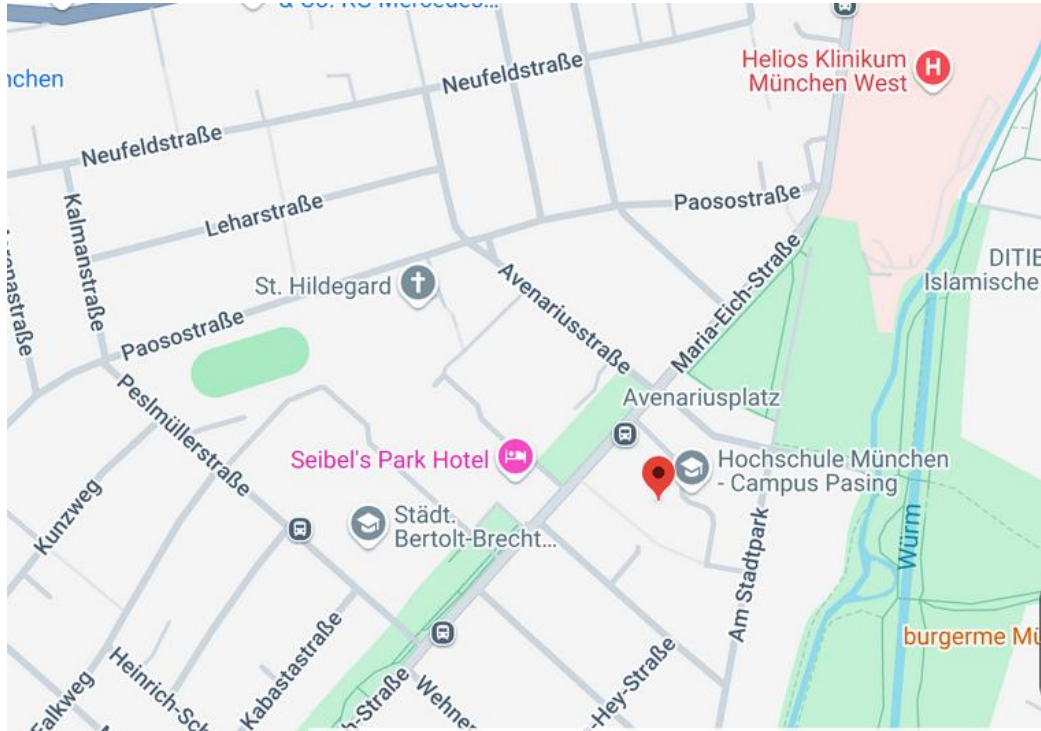
Nicole Morandi-Grassinger

OVERVIEW

- Campus - Location
- Buddy Service
- Get to know each other
- Cultural differences
- Exams
- IMC
- StudyFit
- Fachschaft
- NINE/Hamster
- Questions /Course Registration Assistance
- Buddy Campus tour



CAMPUS PASING - LOCATION



Am Stadtpark 20 Munich

Buildings: K, L

From the train station and S-Bahn station Pasing, take city bus 160 (Lochham) to the stop "Avenariusplatz"

Buddy Service

Buddy matching queries please let us know right after the presentation

General Information, queries and registration:

international-hmbs@hm.edu



THIS IS ME: Something Interesting about me



ONE THING I WISH for this semester



Cultural Differences

Advantages:

- Trust – Independency
- Choice to plan your schedule and daily routine
- Freedom to attend classes or exams
- Open door policy - Feedback welcome (e.g. Buddy...)

Disadvantages

- Information must be processed individually
- Full responsibility lies on the students (e.g. to register for the exams, courses...)

Create a group with other fellow Students and enrol in a German language course:

HM→ <https://gs.hm.edu/en/index.en.html>

VHV→<https://kurse.vhb.org/VHBPORTAL/kursprogramm/kursprogramm.jsp?School=12&Section=160>



EXAMS

You have to register for the exams via PRIMUSS!

Registration Period : Early in May

Examination Period: 06.07.2026 – 17.07.2026

Bring the following documents to the exams:

- Student ID card
- Passport or identity card
- Matrikelnummer (number can be found in PRIMUSS)

All Information and deadlines can be found here:

Int. Office > https://hm.edu/en/your_stay_at_hm/students/exchange/examsandresults.en.html

HMBS-
> <https://hmbs.hm.edu/fakultaet/termine/index.de.html>

Health condition influencing exams, please let us know asap!



International Management Certificate

Study one semester with us and get an additional certificate!

Advantages:

- Preparation for the global labour market
- Knowledge development in international management
- Promotion of global perspectives and intercultural experiences and competences
- Improvement of management specific terminology in English

Requirements

complete 25 ECTS in International Management related modules from our module catalogue (the course Intercultural Communication is mandatory)

Module catalogue and further information

https://www.hm.edu/en/course_offerings/courses_in_english/courses_in_english_info_4.en.html



StudyFit

We care about your Mental Health!

If you experience a Crisis or challenging situation you can contact the following addresses and get emotional support:

Studierendenwerk München Oberbayern



Krisenchat 24h



PAOSO Hochschulgemeinde (Mr.Press)
Michael.Press@elkb.de



Peer Coaches





WHAT IS THE “FACHSCHAFT”?

Student Association



Group of students, who represent the students interests and help to shape the daily lives of students at our faculty on a voluntary basis



Interface between the University and the students



Currently about 70 members representing over 2000 students

WHAT DOES THE FACHSCHAFT DO?



Internal Culture:

Fachschaftevents & support among each other



Active Campus Life:

Organization of events for an exciting day-to-day life on campus, also in cooperation with our department and other partners



Student Representation & University Politics:

Representation of student interests in different committees and functions on department and University level



PAST EVENTS

- Semester Opening & Closing Parties
- Freshmen Project
- Ski Weekend
- Coffecalls
- Zoom Pub Quizzes
- Christmas and Halloween Party
- “Meet the Prof”



ANY QUESTIONS?



 fachschaft_betriebswirtschaft

 fachschaft10@hm.edu

 <https://www.fsbs-hm.de>

YOUR FACHSCHAFT





NINE/Hamster SUPPORT

IT Support

IT Assistance with account activation and installation of VPN-Client (necessary for WiFi)

E-Mail: support-cp@service.hm.edu

NINE/Hamster Support

For assistance or any questions regarding NINE/Hamster

E-Mail: support-nine@hm.edu

NINE/Hamster - Features

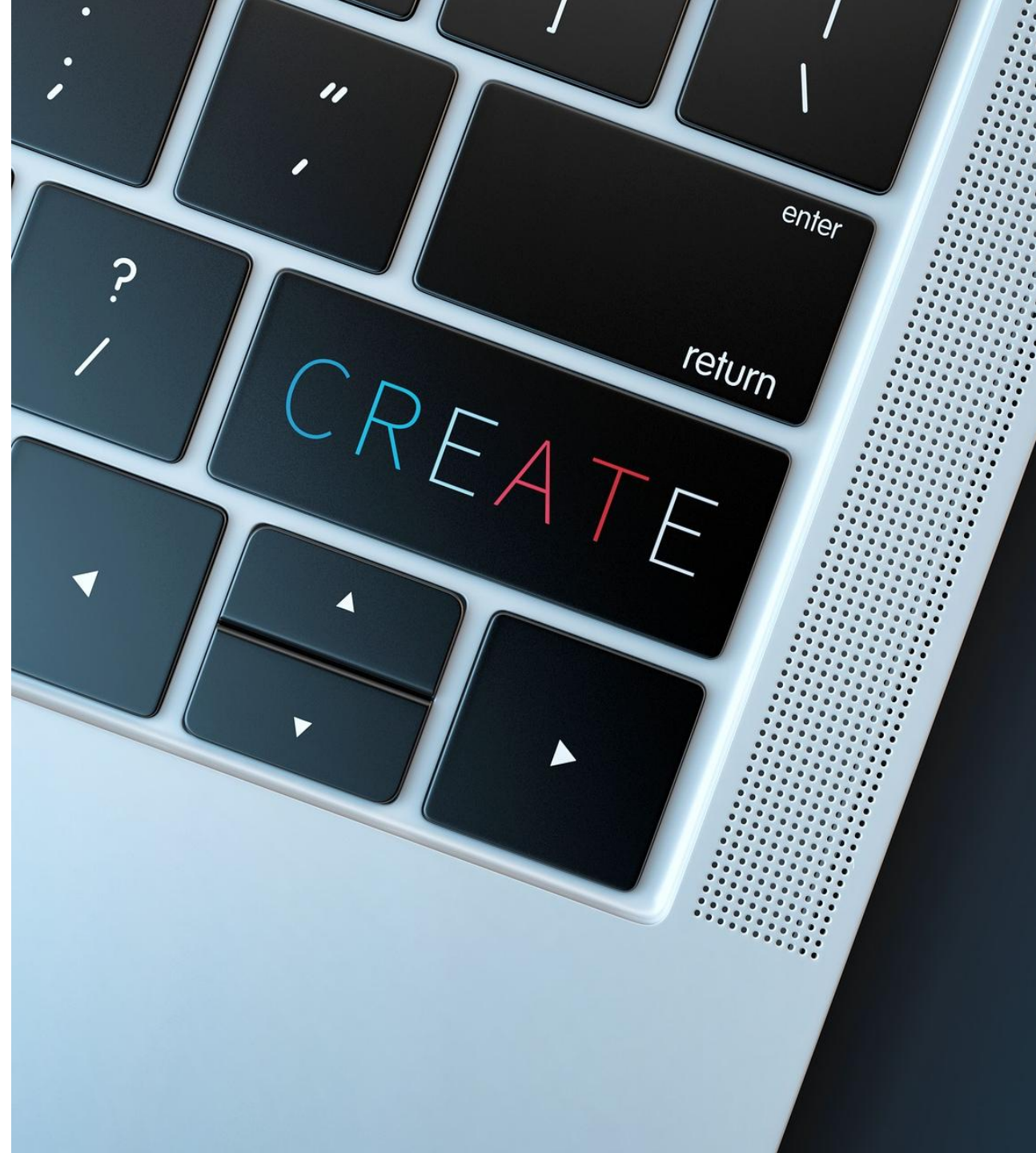
NINE/Hamster is an online tool that helps students organize and overview their courses.

Link→ <https://nine.hm.edu/>

Main features:

- Essential course information (date, time and location of the courses, Lecturer Data, Course description)
- Push-News about courses
- Enrolment in CiE already assigned via PRIMUSS

There are other campus management systems like PRIMUSS, moodle, mahara... For registration and enrolment, you have to use PRIMUSS.



NINE/Hamster Login-Course Enrolment

1. Register at NINE/Hamster <https://nine.hm.edu> (grapevine) with the **HM** e-mail address you used for Primuss and choose a password of your choice.
2. After first login: Select the department and curriculum you are enrolled in (HMBS- Vorlesungsverzeichnis SoSe26)
3. Subscribe to the courses you have received a confirmation from PRIMUSS.

For guidelines, please refer to the E-Mail sent to you separately and ask your buddy for support

[Register only for courses allocated to you via PRIMUSS!!!](#)





**QUESTIONS / Hamster (NINE)
Course Registration Assistance**

**If you want to add/change a course:
write an E-Mail to:
international-hmbs@hm.edu
(we will collect all changes and come back
to you if it is possible)**



-Campus tour with your Buddy and Fellow Students
-Get to know your buddy and enjoy your semester with us!