
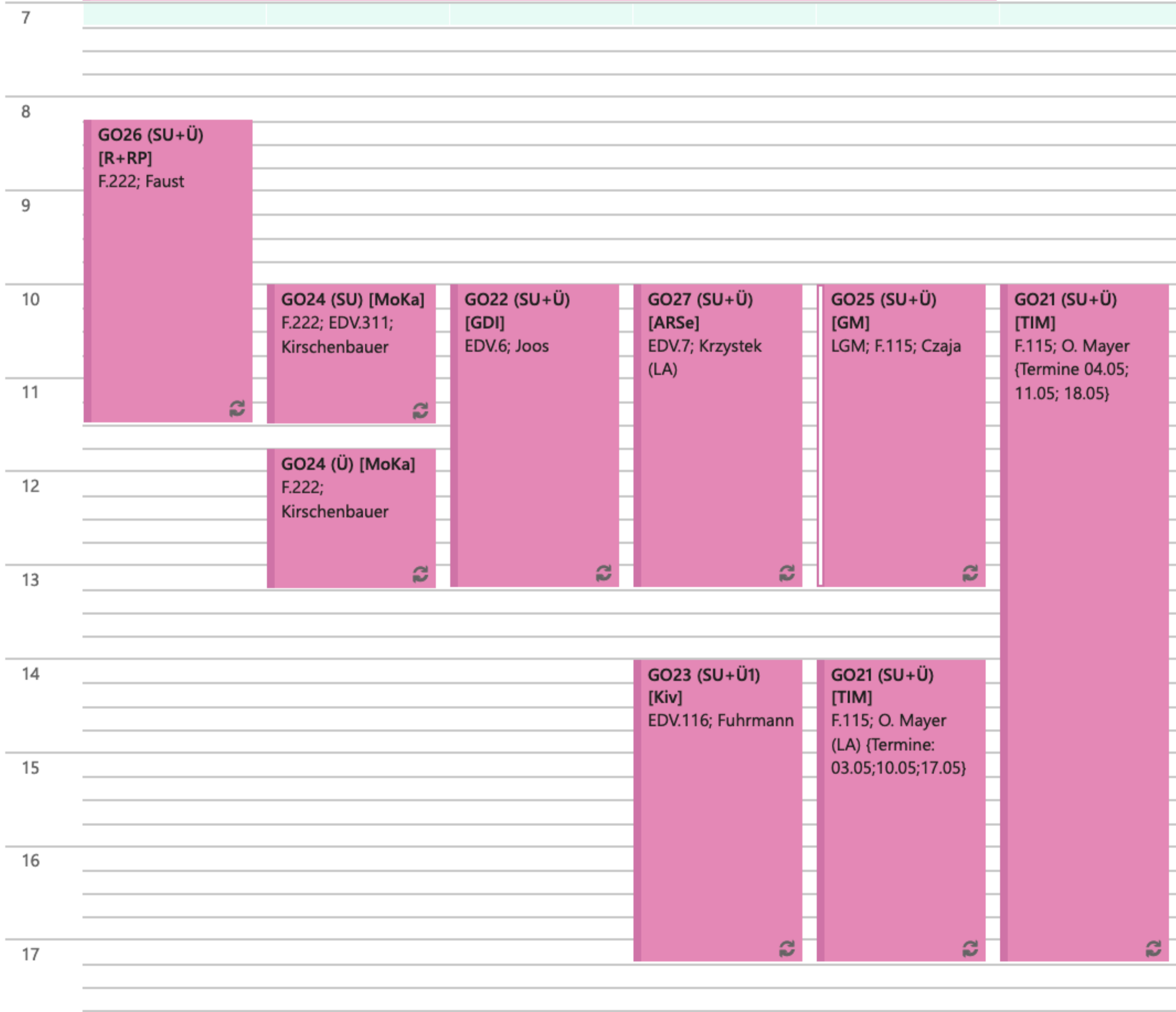


| M  | D  | M  | D  | F  | S  | S  | M  | D  | M  | D  | F  | S  | S  |
|----|----|----|----|----|----|----|----|----|----|----|----|----|----|
| 1  | 2  | 3  | 4  | 5  | 6  | 7  |    |    | 1  | 2  | 3  | 4  | 5  |
| 8  | 9  | 10 | 11 | 12 | 13 | 14 | 6  | 7  | 8  | 9  | 10 | 11 | 12 |
| 15 | 16 | 17 | 18 | 19 | 20 | 21 | 13 | 14 | 15 | 16 | 17 | 18 | 19 |
| 22 | 23 | 24 | 25 | 26 | 27 | 28 | 20 | 21 | 22 | 23 | 24 | 25 | 26 |
| 29 | 30 |    |    |    |    |    | 27 | 28 | 29 | 30 | 31 | 1  | 2  |

- 1 Montag
- 2 Dienstag
- 3 Mittwoch
- 4 Donnerstag
- 5 Freitag
- 6 Samstag

GO28 (SU+Ü) [MN] ==> Blockveranstaltung (2 Wochen Ende Sep.) 



# Erläuterung GO SoSe

Ü1 = Studiengruppe 1 / Ü2 = Studiengruppe 2

| MODUL-NR. | KÜRZEL | MODULTITEL                                  |
|-----------|--------|---|
| GO21      | TIM    | Technology and Innovation Management        |
| GO22      | GDI    | Geodateninfrastruktur                       |
| GO23      | Kiv    | Kartographische Informationsvisualisierung  |
| GO24      | MoKa   | Mobile Kartographie                         |
| GO25      | GM     | Geo-Monitoring                              |
| GO26      | R+RP   | Raumanalysen und regionale Planungsprozesse |
| GO27      | ARSe   | Advanced Remote Sensing Methods             |