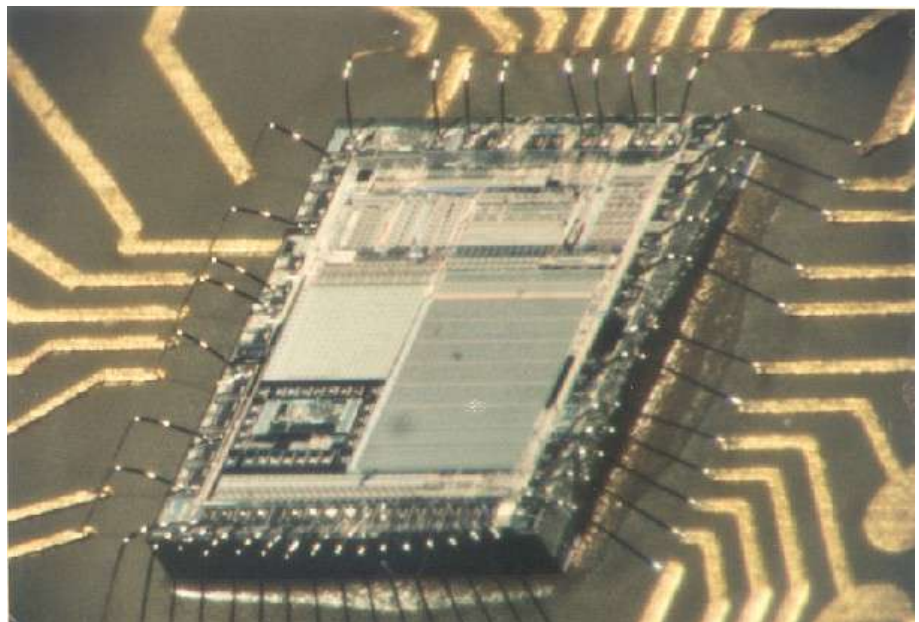
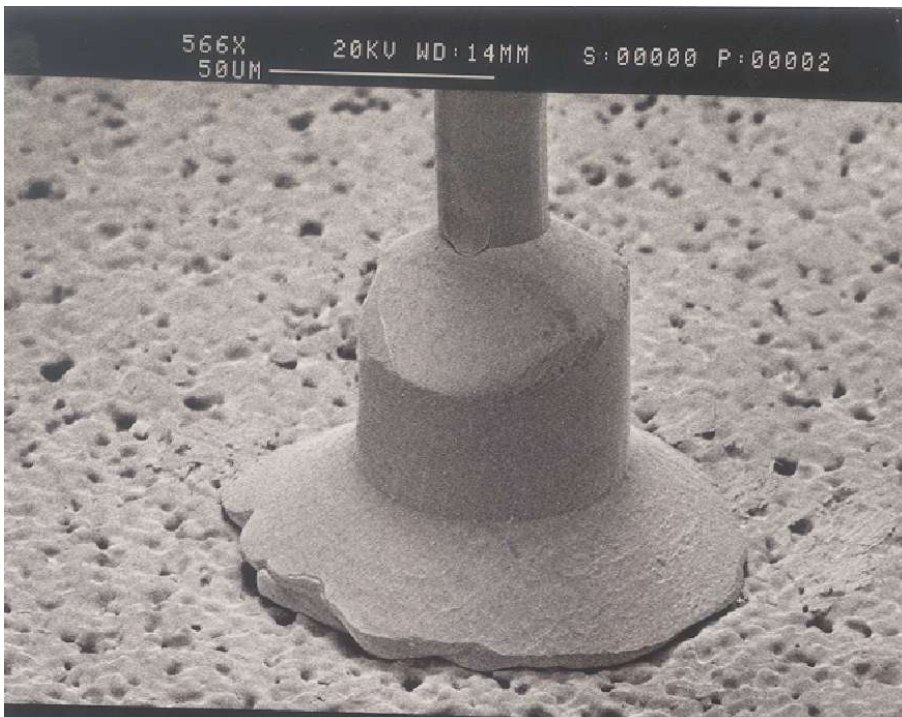
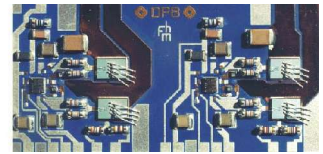


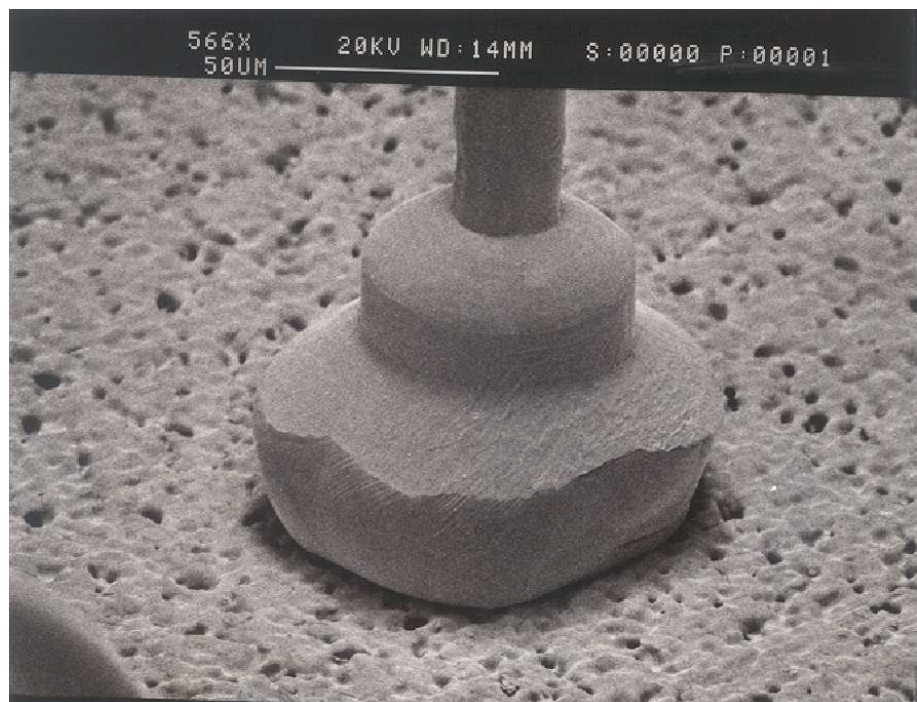
Aluminium - Wedge Bonds auf einem Halbleiter



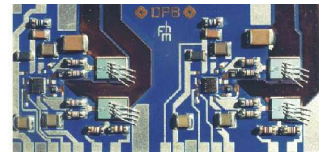
Mit Aluminiumdraht gebondeter Halbleiter.



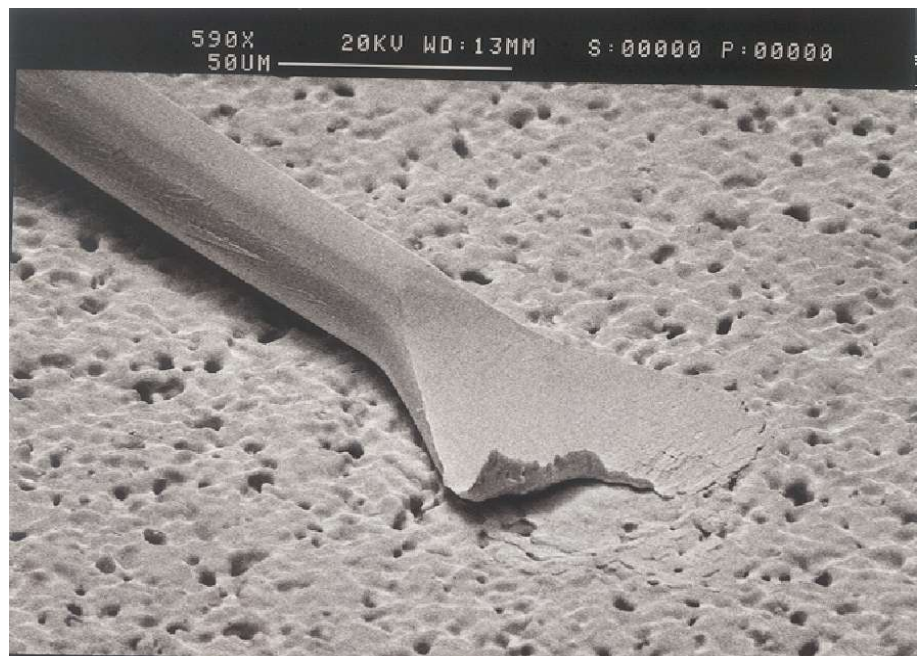
Stark deformierter Ball des ersten Bonds mit einem Golddraht.



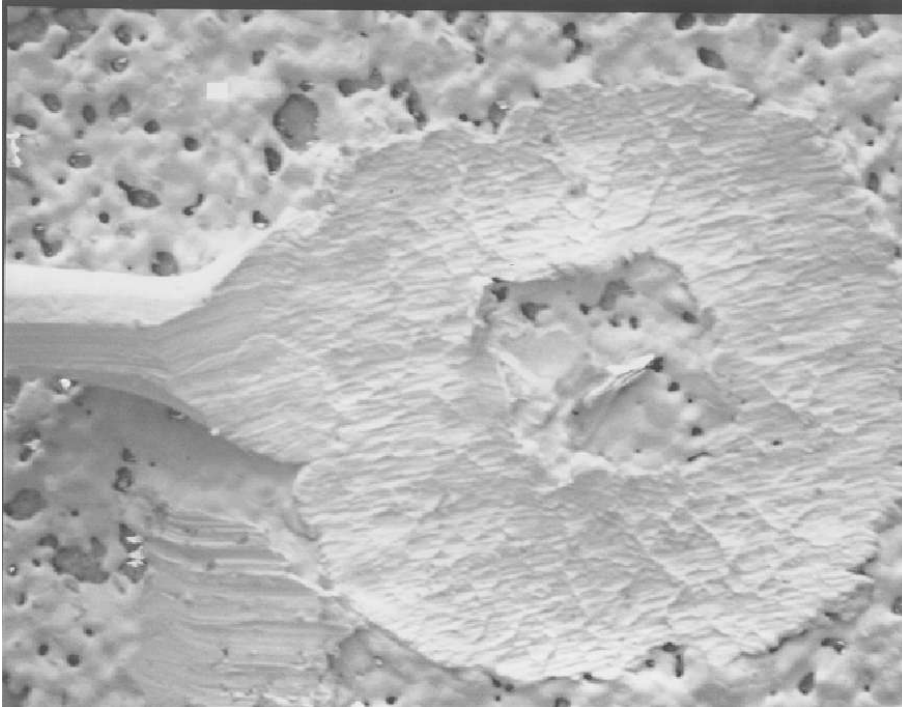
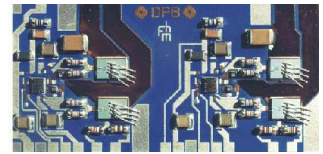
Schöner Ball-Bond mit Golddraht.



Zweite Bondstelle mit Golddraht



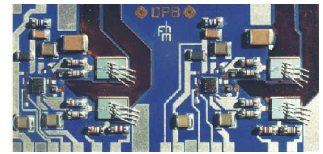
Schlecht haftender Golddrahtbond einer zweiten Bondstelle.



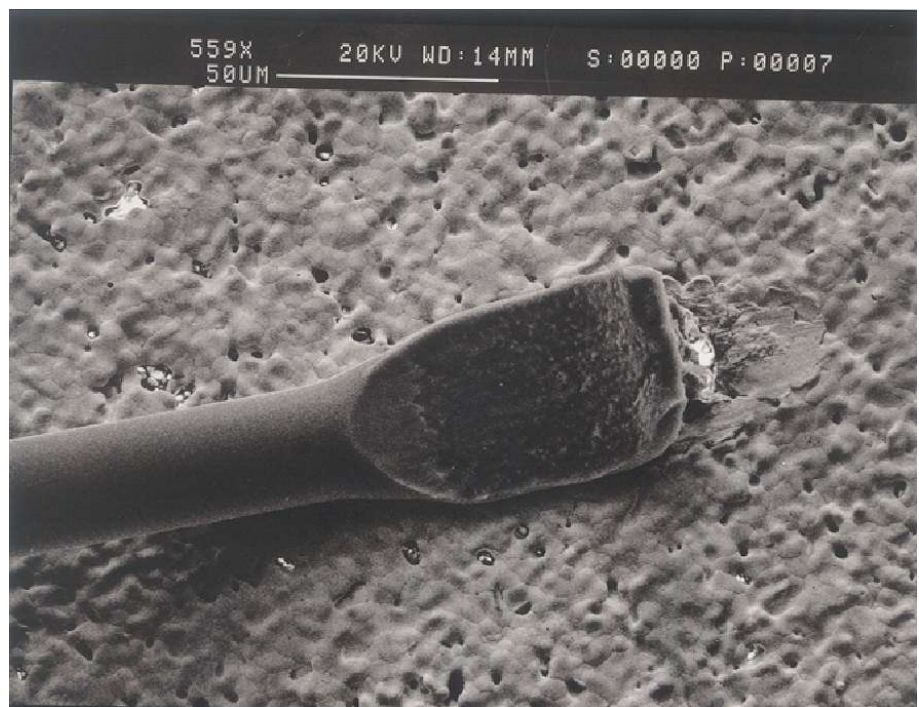
Zweite Bondstelle (Golddraht): zuviel Energie beim Bonden



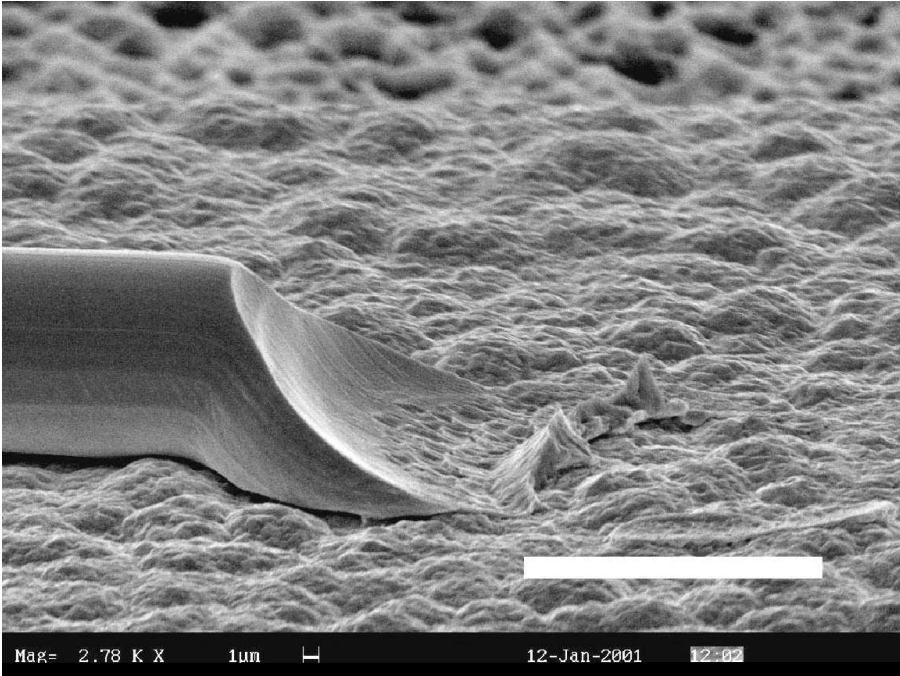
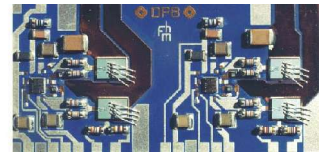
Eine gute zweite Al-Draht Wedge – Wedge-Bondstelle auf Silberleiterbahn



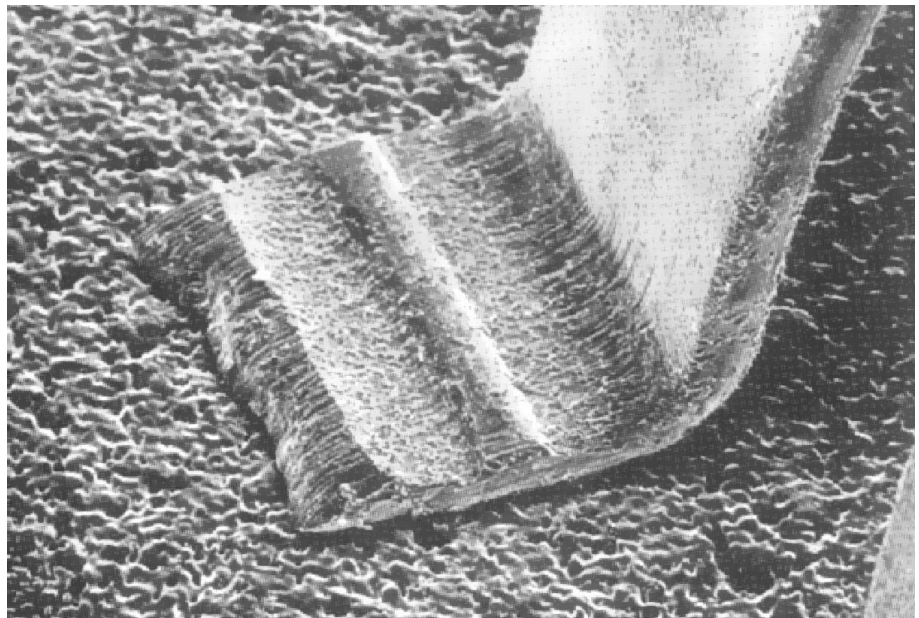
Schöner Aluminium-Wedge- Bond



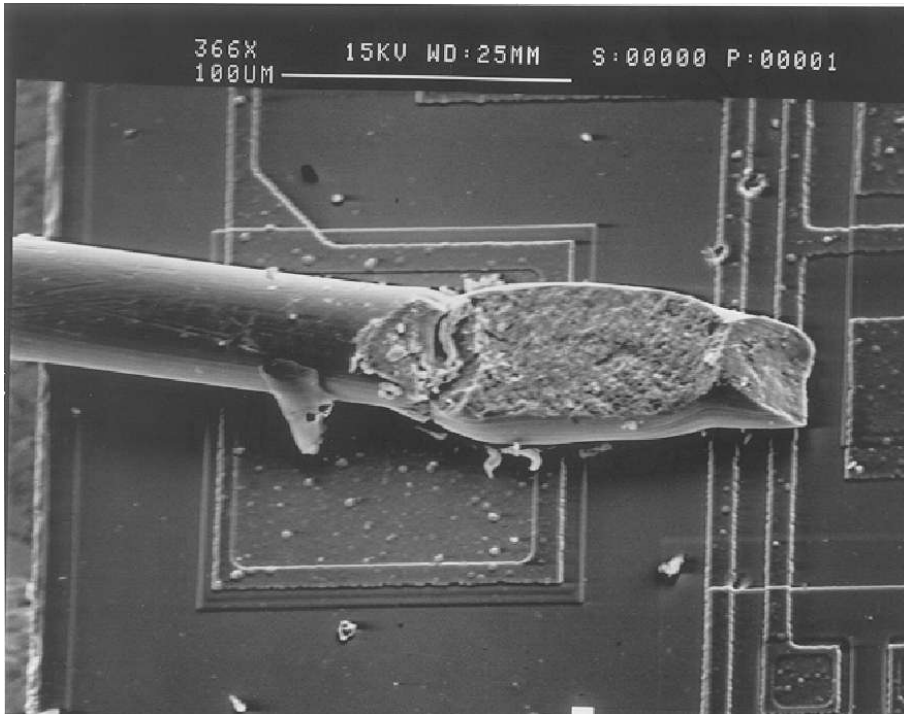
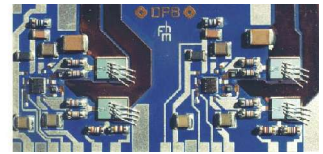
Schlechter Aluminium-Wedge-Bond



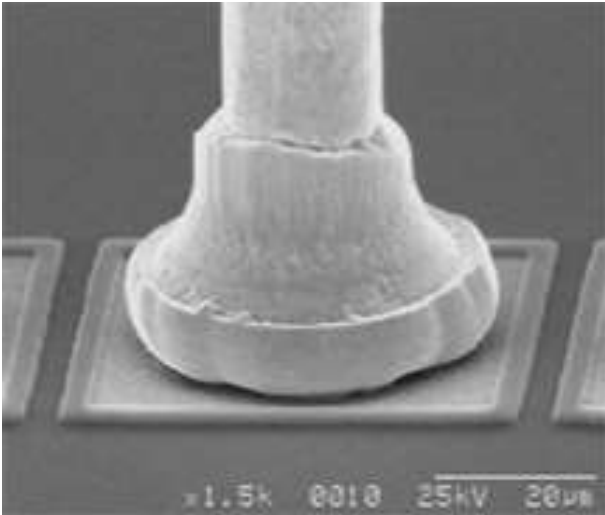
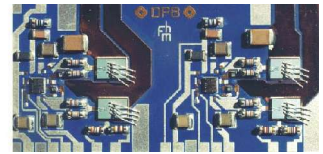
Einge gute zweite Ball-Wedge Bondstelle.



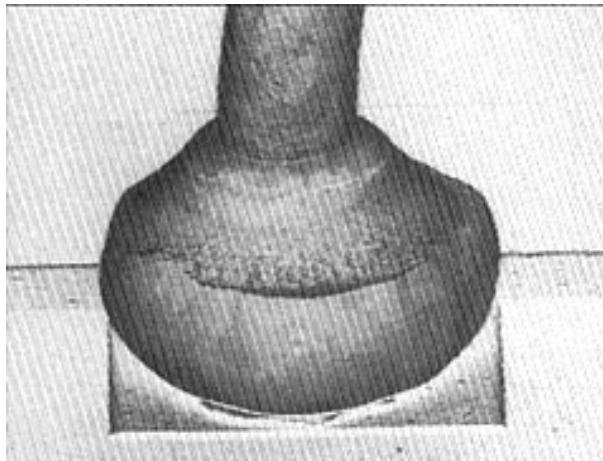
Gute zweite Bondstelle eines Aluminium Bändchens.
(Anwendung im HF-Bereich)



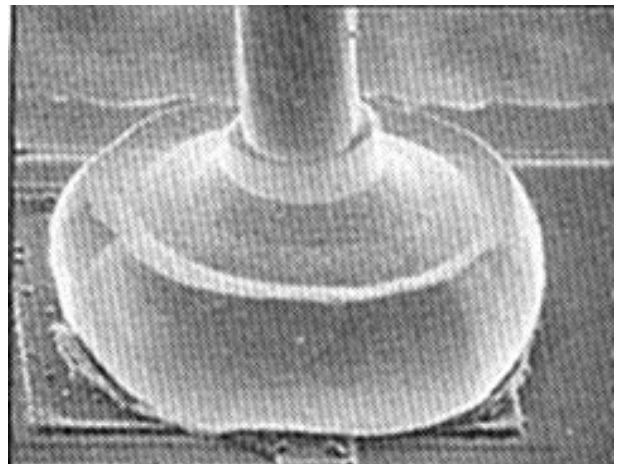
Aluminium-Wedge-Bond. Draht hat eine Bruchstelle.
Ursache ist ein defekter Bondkeil.



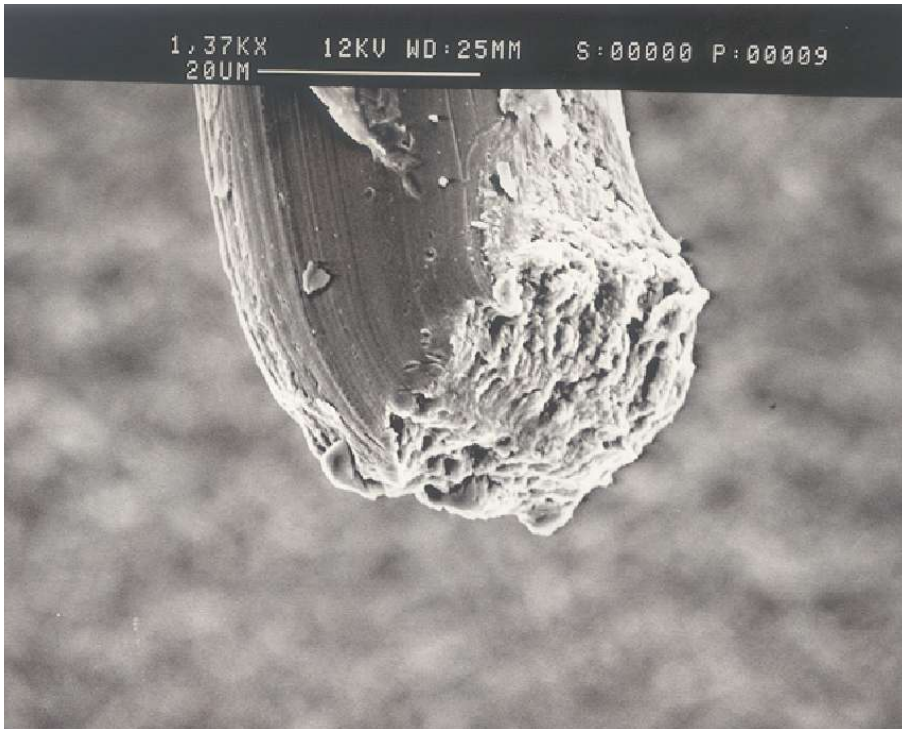
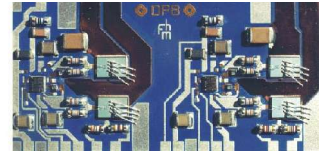
Gute Fine-pitch Ball-Bondstelle eines Thermosonicbonders 17,5 µm Draht.



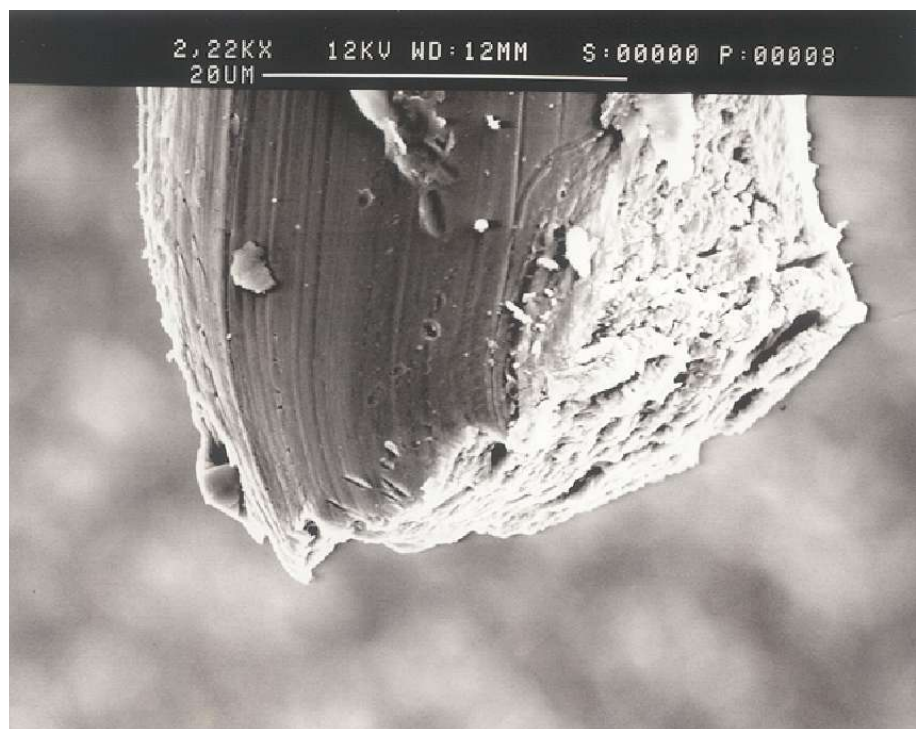
Gute Bondstelle (Thermosonic) 25 µm Draht.



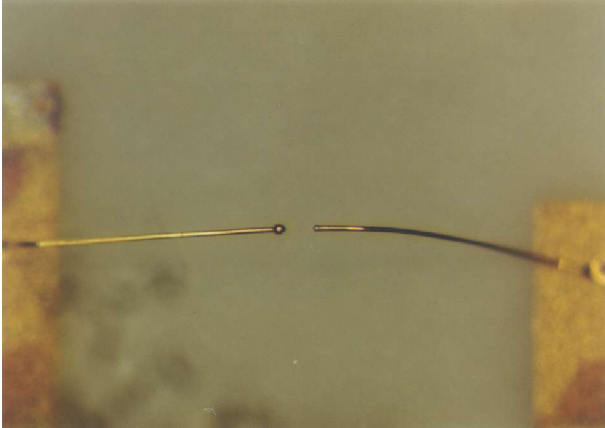
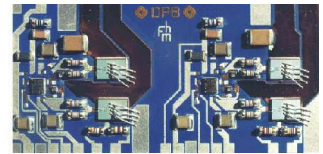
Thermokompression: gute Bondstelle



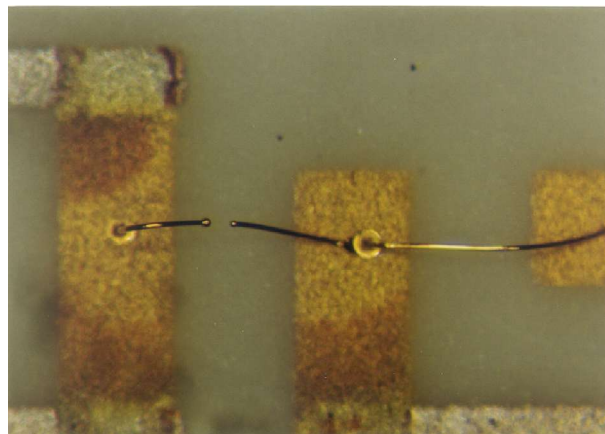
Abgerissener Aluminiumdraht nach einem Wedge-Wedge-Bond.



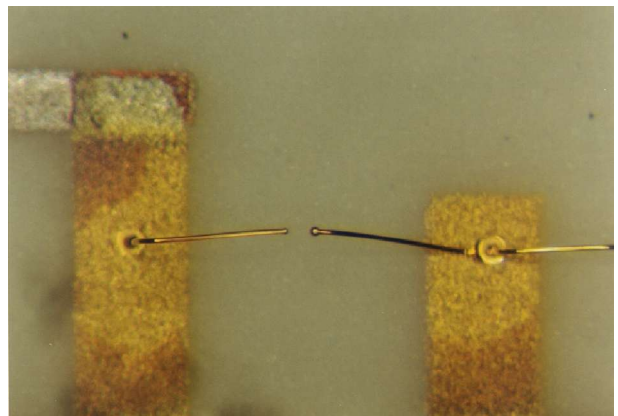
Siehe oben



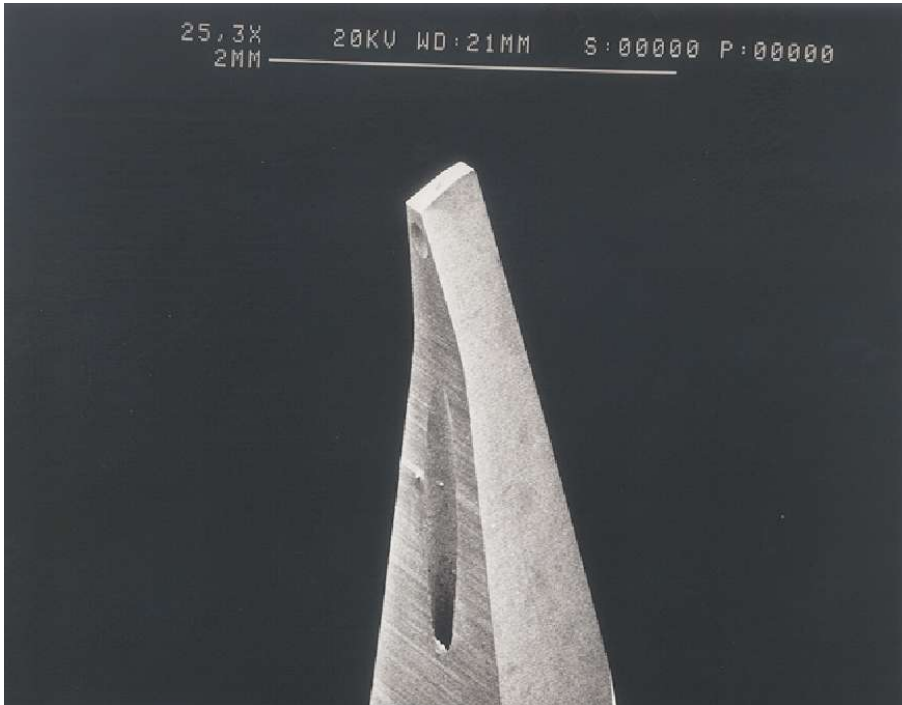
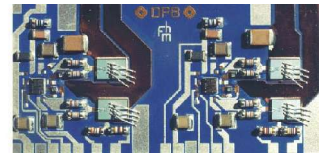
durchgeschmolzene Bonddrähte



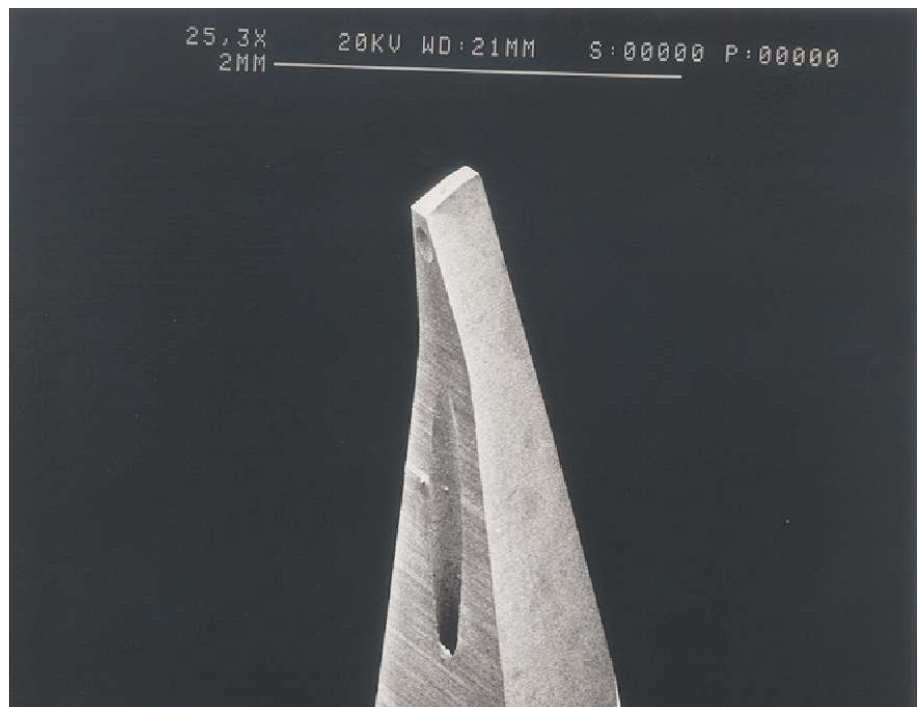
siehe oben



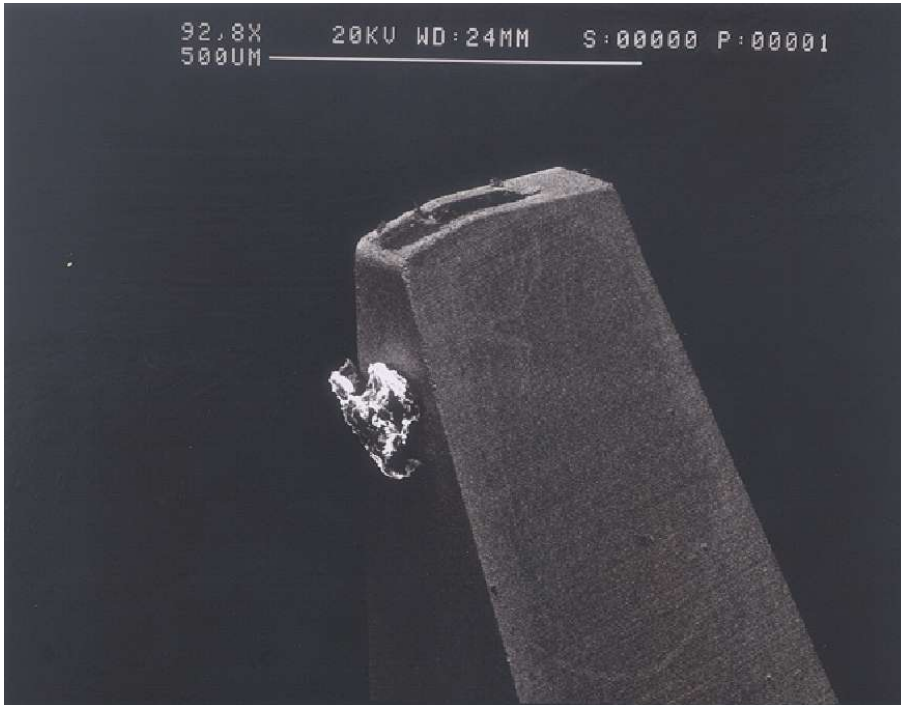
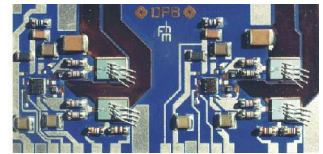
siehe oben



Bondkeil für Aluminium Wedge-Wedge-Bonds.



wie oben



verstopfter Bondkeil